

Getting Started with DLS 2002

Downloading Software

DLS downloading software allows the user to program, monitor, and operate all DSC panels

Before installing this software, read the licensing agreement. If you do not agree with the terms and conditions of this agreement, do not install this software.



Table of Contents

- 1 End User License Agreement**
- 2 Hardware and Software Requirements**
- 3 Installing DLS Software from CD-ROM**
- 4 Installing DLS Software from the Internet**
- 5 Uninstalling DLS Software**
- 6 Using DLS Software**
- 7 Help**

END-USER LICENSE AGREEMENT

For DSC Software Provided With or Without Products or Components

IMPORTANT - READ CAREFULLY: DSC Software purchased with or without Products and Components is copyrighted and is purchased under the following license terms:

This End-User License Agreement ("EULA") is a legal agreement between **You** (the company, individual or entity who acquired the Software and any related Hardware) and **Digital Security Controls Ltd.** ("DSC"), the manufacturer of the integrated security systems and the developer of the software and any related products or components ("HARDWARE") which You acquired.

If the DSC software product ("SOFTWARE PRODUCT" or "SOFTWARE") is intended to be accompanied by HARDWARE, and is NOT accompanied by new HARDWARE, You may not use, copy or install the SOFTWARE PRODUCT. The SOFTWARE PRODUCT includes computer software, and may include associated media, printed materials, and "online" or electronic documentation.

Any software provided along with the SOFTWARE PRODUCT that is associated with a separate end-user license agreement is licensed to You under the terms of that license agreement.

By installing, copying, downloading, storing, accessing or otherwise using the SOFTWARE PRODUCT, You agree unconditionally to be bound by the terms of this EULA, even if this EULA is deemed to be a modification of any previous arrangement or contract. If You do not agree to the terms of this EULA, DSC is unwilling to license the SOFTWARE PRODUCT to You, and You have no right to use it.

SOFTWARE PRODUCT LICENSE

The SOFTWARE PRODUCT is protected by copyright laws and international copyright treaties, as well as other intellectual property laws and treaties. The SOFTWARE PRODUCT is licensed, not sold.

1. GRANT OF LICENSE. This EULA grants You the following rights:

(a) Software Installation and Use. For each license You acquire, You may have only one copy of the SOFTWARE PRODUCT installed on the HARDWARE.

(b) Storage/Network Use. The SOFTWARE PRODUCT may not be installed, accessed, displayed, run, shared or used concurrently on or from different computers, including a workstation, terminal or other digital electronic device ("Device"). In other words, if You have several workstations, You will have to acquire a license for each workstation where the SOFTWARE will be used.

(c) Back-up Copy. You may make back-up copies of the SOFTWARE PRODUCT, but You may only have one copy per license installed at any given time. You may use the back-up copy solely for archival purposes. Except as expressly provided in this EULA, You may not otherwise make copies of the SOFTWARE PRODUCT, including the printed materials accompanying the SOFTWARE.

2. DESCRIPTION OF OTHER RIGHTS AND LIMITATIONS.

(a) Limitations on Reverse Engineering, Decompilation and Disassembly. You may not reverse engineer, decompile, or disassemble the SOFTWARE PRODUCT, except and only to the extent that such activity is expressly permitted by applicable law notwithstanding this limitation. You may not make any changes or modifications to the Software, without the written permission of an officer of DSC. You may not remove any proprietary notices, marks or labels from the Software Product. You shall institute reasonable measures to ensure compliance with the terms and conditions of this EULA.

(b) Separation of Components. The SOFTWARE PRODUCT is licensed as a single product. Its component parts may not be separated for use on more than one HARDWARE unit.

(c) Single INTEGRATED PRODUCT. If You acquired this SOFTWARE with HARDWARE, then the SOFTWARE PRODUCT is licensed with the HARDWARE as a single integrated product. In this case, the SOFTWARE PRODUCT may only be used with the HARDWARE as set forth in this EULA.

(d) Rental. You may not rent, lease or lend the SOFTWARE PRODUCT. You may not make it available to others or post it on a server or a web site.

(e) Software Product Transfer. You may transfer all of Your rights under this EULA only as part of a permanent sale or transfer of the HARDWARE, provided You retain no copies, You transfer all of the SOFTWARE PRODUCT (including all component parts, the media and printed materials, any upgrades and this EULA), and provided the recipient agrees to the terms of this EULA. If the SOFTWARE PRODUCT is an upgrade, any transfer must also include all prior versions of the SOFTWARE PRODUCT.

(f) Termination. Without prejudice to any other rights, DSC may terminate this EULA if You fail to comply with the terms and conditions of this EULA. In such event, You must destroy all copies of the SOFTWARE PRODUCT and all of its component parts.

(g) Trademarks. This EULA does not grant You any rights in connection with any trademarks or service marks of DSC or its suppliers.

END-USER LICENSE AGREEMENT (cont.)

3. COPYRIGHT.

All title and intellectual property rights in and to the SOFTWARE PRODUCT (including but not limited to any images, photographs, and text incorporated into the SOFTWARE PRODUCT), the accompanying printed materials, and any copies of the SOFTWARE PRODUCT, are owned by DSC or its suppliers. You may not copy the printed materials accompanying the SOFTWARE PRODUCT. All title and intellectual property rights in and to the content which may be accessed through use of the SOFTWARE PRODUCT are the property of the respective content owner and may be protected by applicable copyright or other intellectual property laws and treaties. This EULA grants You no rights to use such content. All rights not expressly granted under this EULA are reserved by DSC and its suppliers.

4. EXPORT RESTRICTIONS.

You agree that You will not export or re-export the SOFTWARE PRODUCT to any country, person, or entity subject to Canadian export restrictions.

5. CHOICE OF LAW: This Software License Agreement is governed by the laws of the Province of Ontario, Canada.

6. ARBITRATION

All disputes arising in connection with this Agreement shall be determined by final and binding arbitration in accordance with the *International Commercial Arbitration Act*, R.S.O. 1990, c. I.9, or any successor or replacement legislation which may be in force, and the parties agree to be bound by the arbitrator's decision. The place of arbitration shall be Toronto, Canada.

7. LIMITED WARRANTY

(a) NO WARRANTY

DSC PROVIDES THE SOFTWARE "AS IS" WITHOUT WARRANTY. DSC DOES NOT WARRANT THAT THE SOFTWARE WILL MEET YOUR REQUIREMENTS OR THAT OPERATION OF THE SOFTWARE WILL BE UNINTERRUPTED OR ERROR-FREE.

(b) CHANGES IN OPERATING ENVIRONMENT

DSC shall not be responsible for problems caused by changes in the operating characteristics of the HARDWARE, or for problems in the interaction of the SOFTWARE PRODUCT with non-DSC-SOFTWARE or HARDWARE PRODUCTS.

(c) LIMITATION OF LIABILITY; WARRANTY REFLECTS ALLOCATION OF RISK

IN ANY EVENT, IF ANY STATUTE IMPLIES WARRANTIES OR CONDITIONS NOT STATED IN THIS LICENSE AGREEMENT, DSC'S ENTIRE LIABILITY UNDER ANY PROVISION OF THIS LICENSE AGREEMENT SHALL BE LIMITED TO THE GREATER OF THE AMOUNT ACTUALLY PAID BY YOU TO LICENSE THE SOFTWARE PRODUCT AND FIVE CANADIAN DOLLARS (USD\$5.00). BECAUSE SOME JURISDICTIONS DO NOT ALLOW THE EXCLUSION OR LIMITATION OF LIABILITY FOR CONSEQUENTIAL OR INCIDENTAL DAMAGES, THE ABOVE LIMITATION MAY NOT APPLY TO YOU.

(d) DISCLAIMER OF WARRANTIES

THIS WARRANTY CONTAINS THE ENTIRE WARRANTY AND SHALL BE IN LIEU OF ANY AND ALL OTHER WARRANTIES, WHETHER EXPRESSED OR IMPLIED (INCLUDING ALL IMPLIED WARRANTIES OF MERCHANTABILITY OR FITNESS FOR A PARTICULAR PURPOSE) AND OF ALL OTHER OBLIGATIONS OR LIABILITIES ON THE PART OF DSC. DSC MAKES NO OTHER WARRANTIES. DSC NEITHER ASSUMES NOR AUTHORIZES ANY OTHER PERSON PURPORTING TO ACT ON ITS BEHALF TO MODIFY OR TO CHANGE THIS WARRANTY, NOR TO ASSUME FOR IT ANY OTHER WARRANTY OR LIABILITY CONCERNING THIS SOFTWARE PRODUCT.

(e) EXCLUSIVE REMEDY AND LIMITATION OF WARRANTY

UNDER NO CIRCUMSTANCES SHALL DSC BE LIABLE FOR ANY SPECIAL, INCIDENTAL, CONSEQUENTIAL OR INDIRECT DAMAGES BASED UPON BREACH OF WARRANTY, BREACH OF CONTRACT, NEGLIGENCE, STRICT LIABILITY, OR ANY OTHER LEGAL THEORY. SUCH DAMAGES INCLUDE, BUT ARE NOT LIMITED TO, LOSS OF PROFITS, LOSS OF THE SOFTWARE PRODUCT OR ANY ASSOCIATED EQUIPMENT, COST OF CAPITAL, COST OF SUBSTITUTE OR REPLACEMENT EQUIPMENT, FACILITIES OR SERVICES, DOWN TIME, PURCHASER'S TIME, THE CLAIMS OF THIRD PARTIES, INCLUDING CUSTOMERS, AND INJURY TO PROPERTY.

WARNING: DSC recommends that the entire system be completely tested on a regular basis. However, despite frequent testing, and due to, but not limited to, criminal tampering or electrical disruption, it is possible for this SOFTWARE PRODUCT to fail to perform as expected.

If You do not agree to the terms of this EULA, DSC is unwilling to license the SOFTWARE PRODUCT to You, and You have no right to use it

Hardware and Software Requirements

DLS 2002 Minimum Requirements

- Intel®* 486 DX2-66 (or minimum requirement for the operating system) with 32MB of RAM. If using T-Link communications, the minimum requirement is a Pentium®* 200 MHz with 64MB of RAM
- *Microsoft Windows® 95, Windows® 98, WindowsNT® v4.0 Workstation (with Service Pack 3 or later installed), Windows® Me, Windows® 2000 Professional, or Windows® XP Home, Windows® XP Pro****
- 640x480 resolution monitor with High Color (16 bit) video
- DSC MD12 v1.1 External Modem and/or PC-Link connector and/or T-Link
- CD-ROM drive to install the software or Internet access to the DSC Dealer Website
- 1.44MB floppy drive (for installing upgrades and driver packs)
- Pointing Device (mouse or trackball)
- A hard disk with at least 150 megabytes of free space (required space increases as panel files are added to the installation and this number is dependent upon the CD-key used)
- (Optional) Ink jet, laser, or bubble jet printer

DLS 2002 Recommended System

- Intel Pentium III* or AMD K6-III** @ 450MHz. (or greater) with 128MB of RAM
- *Microsoft Windows® 98 SE, WindowsNT® v4.0 Workstation (with Service Pack 6 or later installed), Windows® Me, Windows® 2000 Professional, or Windows® XP Home, Windows® XP Pro****
- 1024x768 resolution monitor with High Color (16 bit) video
- DSC MD12 v1.1 External Modem and/or PC-Link connector and/or T-Link
- CD-ROM drive to install the software or Internet access to the DSC Dealer Website
- 1.44MB floppy drive (for installing upgrades and driver packs)
- Pointing Device (mouse or trackball)
- A hard disk with at least 150 megabytes of free space (required space increases as panel files are added to the installation and this number is dependent upon the CD-key used)
- (Optional) Ink jet, laser, or bubble jet printer

* Intel® and Pentium® are registered trademarks of the Intel corporation

** AMD® is a registered trademark of Advanced Micro Devices Inc.

*** Microsoft®, Windows® 95, Windows® 98, WindowsNT®, Windows® Me, Windows® 2000 Professional, and Windows® XP are either registered trademarks or trademarks of Microsoft Corporation in the United States and/or other countries.

Modems

If the modem you are using is not listed, refer to **Selecting a Modem, PC-Link or T-Link** in the **DLS 2002 Help File** for information on how to set up the software for use with a specific modem. By default, DLS 2002 supports **DSC MD12 v1.1 External**

PC-LINK

The PC-LINK connector will allow you to send data directly from your computer to a compatible control panel. This is a faster and more efficient way to communicate with a panel. To use PC-LINK, you will need either a DSC PC-LINK Local Download Kit-DB09 (9-pin connector) or a PC-LINK Local Download Kit DB25 (25-pin connector). For more information on communicating with panels using PC-LINK, see **Communicating with PC-Link** in the **DLS 2002 Help File**

T-LINK

T-LINK allows you to send data directly from your computer to a compatible control panel connected to your intranet. For more information on communicating with panels using T-Link, see **Communicating with T-Link** in the **DLS 2002 Help File**

Installing DLS 2002 from CD-ROM

Before you install DLS-2002, ensure that the computer's hard drive has at least 150 megabytes of free disk space (depending on the CD Key used). DLS 2002 must be installed locally to function properly. When installing from a network drive, ensure that the drive is set up so that you can share it with other users.

When installing or uninstalling DLS 2002, make sure that DLS 2002 is not currently running.

NOTE: *CD Keys are selected from a pick list during the installation.*

NOTE: *Only one copy of any version of DLS 2002 can be installed on a computer at any time*

- 1 Insert the **DLS 2002** installation CD into the CD-ROM drive. If the DLS 2002 Autorun window is displayed, click "Install DLS" and follow the instructions provided. If it is not displayed, continue with Step 2



- 2 Click **Start**
- 3 Select **Run**
- 4 Click **Browse** to find the CD-ROM drive that contains the DLS 2002 installation CD
- 5 Select the **CD-ROM** drive by double-clicking it.
- 6 Select **Setup.exe** under **File Name**
- 7 Click **OK**

A window will be displayed that contains information about the DLS 2002 program and version number.

- 8 Follow the instructions in the Setup program

Installing DLS 2002 from the Internet

Before you install DLS 2002, ensure that the computer's hard drive has at least 150 megabytes of free disk space (depending on the CD Key used). DLS 2002 must be installed locally to function properly. When installing from a network drive, ensure that the drive is set up so that you can share it with other users. When installing or uninstalling DLS 2002, make sure that DLS 2002 is not currently running.

NOTE: *CD Keys are selected from a pick list during the installation.*

NOTE: *Only one copy of any version of DLS 2002 can be installed on a computer at any time*

- 1 Go to www.dsc.com website.
- 2 In the **Authorized Dealer Area** click on **DLS Software Updates**.
- 3 The following window will be displayed.

Authorized Dealer Area
Log-in: North American Site
Log-in: International Site
Register (North America)
Register (International)
Technical Support (NA)
Technical Support (Intl)
Manuals (NA)
Manuals (Intl)
Feedback on Manuals
Dealer News Area
Technical Bulletins
Application Notes
Training Seminars
DLS Software Updates
Product Presentations
Images & DSC Logos



The dialog box titled "Enter Network Password" contains a key icon and the instruction "Please type your user name and password." It has fields for "Site" (protect.dscsec.com), "Realm" (AuthentiX), "User Name" (smithj), and "Password" (masked with asterisks). There is a checkbox for "Save this password in your password list" which is checked. At the bottom are "OK" and "Cancel" buttons.

- 4 Enter your **user name** and **password**.
- 5 Click **OK**.

Follow the instructions indicated on the dealer website

Uninstalling DLS 2002

To Uninstall DLS 2002:

- 1** Click **Start**
- 2** Select **Settings**
- 3** Select **Control Panel**
- 4** Double-click **Add/Remove Programs**
- 5** Select **DLS**
- 6** Click **Add/Remove**
- 7** When the **UninstallShield Wizard** is finished, click **OK**

When the uninstall process is complete, there may still be some DLS files on your hard drive. You can delete these files with Windows Explorer.

Caution:

If you delete the remaining DLS root directory and its contents, all of your account files will be deleted.

Note:


Account files created with previous versions of DLS can be converted to DLS 2002 format.

Using DLS 2002

Once DLS 2002 is installed, you can launch the program from Windows Explorer, or from the Start menu.

Note *Ensure that all unnecessary applications are closed before beginning this installation*

To launch DLS 2002 from the Start menu:

- 1 Click **Start**
- 2 Select **Programs**
- 3 Select **DLS**
- 4 Select **DLS 2002** icon 

To launch DLS 2002 from Windows Explorer:

- 5 Select the hard drive containing the DLS 2002 program
- 6 Select the folder containing the DLS 2002 program
- 7 Double-click on **DLS3_32.exe**

Security Stamp

The first time that you run DLS 2002, it will ask you to enter a Security Stamp. DLS 2002 uses this stamp to encrypt all of your accounts.

The stamp can be up to 31 characters long. When entering the stamp, both **UPPERCASE** and **lowercase** characters can be used, but they are not the same (i.e. “a” and “A” are not the same).

Note:

If you wish to share accounts between DLS 2002 installations over a network, all DLS 2002 installations must have the same security stamp.

Caution:

It is important that the security stamp be recorded and safely filed. If it is forgotten, there is no way to recover the security stamp from the computer or from the program.

Using DLS 2002 cont.

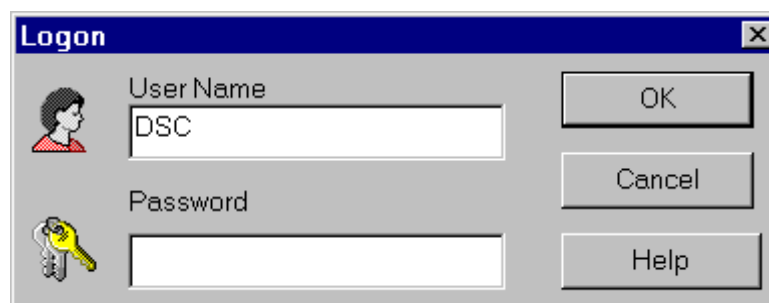
Logging On:

The first time that you log on, the following window will be displayed.



When you click on **OK**, DLS 2002 logon window will be displayed and prompt you to enter your user name and password.

- 1 Enter your **user name** under **User Name**.



- 2 Enter your **password** under **password**
- 3 Click **OK**

Note:

*By default, the user name is 'DSC', and the password is '1234'. The user name and password fields are case-sensitive: if you choose, as your password, the word "**SECURITY**" all in upper case, entering the word "**security**" in lower case will not be accepted as a valid password*

Note:

*After you have logged on, the Account Explorer page will be displayed. Press **[F1]** or click on **Help** on the menu bar to access information on all of the DLS 2002 features.*

Help

Software Fails to Load

IF DLS 2002 fails to load perform the following:

- Shutdown computer, reboot computer and reload DLS 2002 software.
Do not run any other applications
- If the program is partially loaded look for **DLS3 Diagnose.exe** in the DLS Folder. Run this program. This software will attempt to correct faults or errors associated with the installation.

Note: A list of errors will be generated and stored in the DLS folder in a file called **DLS Diagnose.txt** this will aid you or a DLS representative in troubleshooting the problem.

- Contact DSC NA Technical Support 1-800-387-3630 ● www.dsc.com