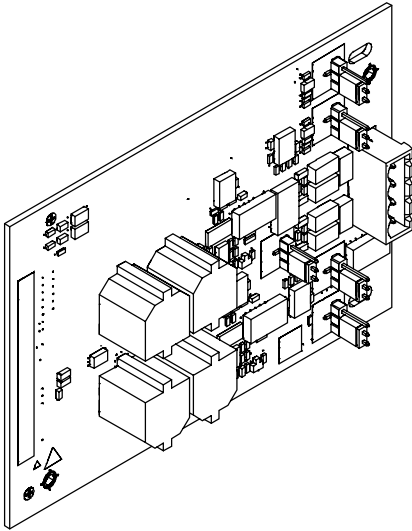


SIEMENS



FCI2011-U1

NAC module (1A/2B)

Mounting

Installation

Legal notice

Technical specifications and availability subject to change without notice.

Transmittal, reproduction, dissemination and/or editing of this document as well as utilization of its contents and communication thereof to others without express authorization are prohibited. Offenders will be held liable for payment of damages. All rights created by patent grant or registration of a utility model or design patent are reserved.

Issued by:

Siemens Industry, Inc.
Building Technologies Division
8 Fernwood Road
Florham Park, NJ 07932
Tel. +1 973-593-2600
www.sbt.siemens.com/FIS

Edition: 2018-03-16

Document ID: A6V10315036_d_en_--

© Siemens Industry, Inc., 2012

Table of contents

1	Description	5
2	Mounting	6
3	Views.....	7
4	Pin assignments for NAC 2.....	8
4.1	X5 NAC 2 class A and NAC 2-1 and NAC 2-2 class B terminal block.....	8
5	Adjusting elements for NAC 2	9
5.1	X602 Jumper DEGRADED MODE ENABLE/DISABLE for NAC 2 class A or NAC 2-1 class B.....	9
5.2	X603 Jumper DEGRADED MODE ENABLE/DISABLE for NAC 2-2 class B	9
5.3	X604, X605 and X606 NAC 2 class A/B selection jumper	10
6	Technical data.....	11
7	FCC Statement	12

1 Description

The notification appliance expansion module (NAC) provides an additional class A circuit or 2 additional class B circuits. Each class A circuit or each of the two class B circuits has a rating of 3 A. The header is connected to X901 on the periphery board. The same jumpers have to be configured on the card as with the periphery board for class A/B circuit selection and degraded mode. All jumpers must be configured, and the module in place on X901 before power is applied to the system.

Properties

- Additional NAC circuits with 3 A power for one class A circuit or 3 A for each class B circuit
- Protected against voltage surge and shorted outputs
- Circuit monitored for short, open, and ground fault
- Ground faults detected at <1 k Ω
- Circuits are power limited

2 Mounting

The NAC module (1A/2B) FCI2011 is installed on the periphery board as shown and screwed onto the back box. Slot X901 is also used for the releasing module.

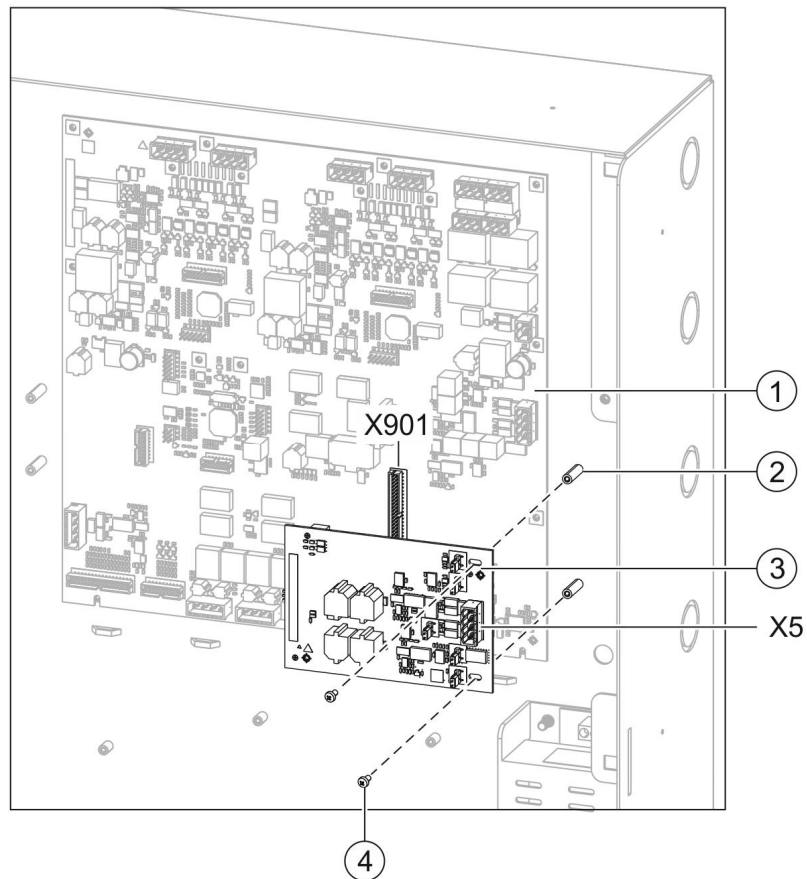


Figure 1: Installing the NAC module on the periphery board

1	Periphery board (250p) or periphery board (500p)
2	Threaded standoffs on back box
3	NAC module (1A/2B) FCI2011
4	2x fixing screw
X901	Slot in periphery board
X5	Connection terminal on NAC module (1A/2B)

1. Plug the NAC module (3) into slot X901 on the periphery board as shown.
2. Fasten the NAC module to the threaded standoffs (2) in the back box using the two fixing screws (4).
3. Wire up the NAC module according to the pin assignment.

3 Views

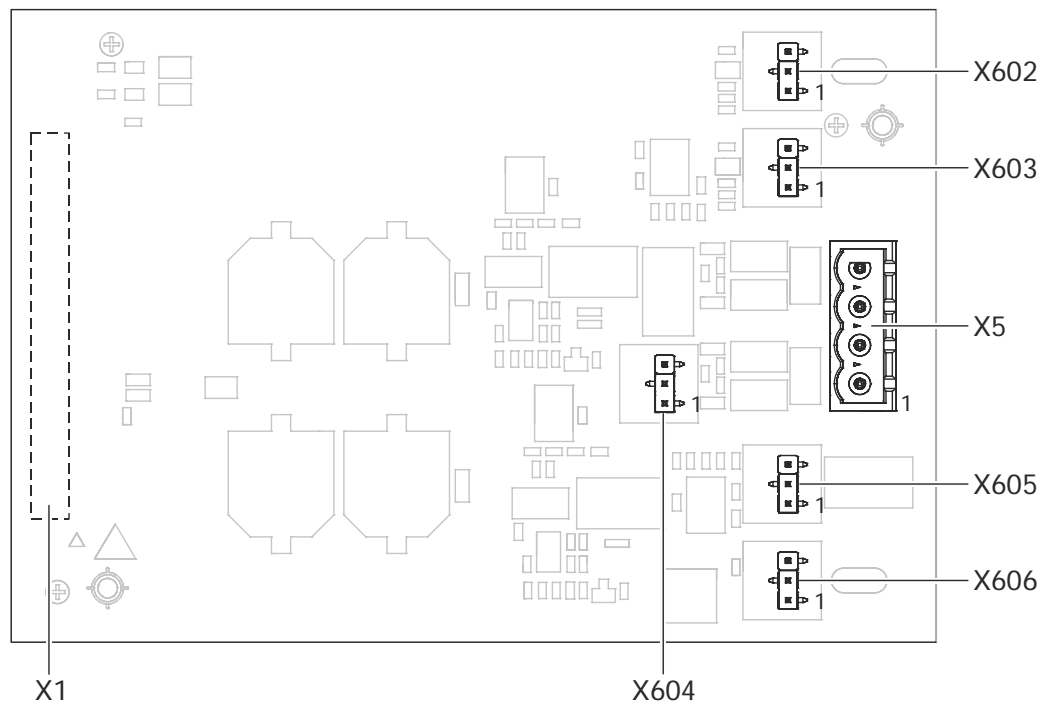


Figure 2: Printed circuit board view for FCI2011

Element	Des.	Function
Connector	X1	Connection to periphery board
	X5	NAC 2 output
	X602	DEGRADED MODE ENABLE/DISABLE for NAC 2 class A or NAC 2-1 class B
	X603	DEGRADED MODE ENABLE/DISABLE for NAC 2-2 class B
	X604	NAC 2 class A/B selection
	X605	NAC 2 class A/B selection
	X606	NAC 2 class A/B selection

4 Pin assignments for NAC 2

4.1 X5 NAC 2 class A and NAC 2-1 and NAC 2-2 class B terminal block

Pin	Designation	Description
4	NAC2-1 (+)	Positive feed for notification appliances for NAC 2 class A or NAC 2
3	NAC2-1 (-)	Return feed for notification appliances for NAC 2 class A or NAC 2
2	NAC2-2 (+)	Positive feed for notification appliances for NAC 2 class A or NAC 2
1	NAC2-2 (-)	Return feed for notification appliances for NAC 2

Admissible cable cross-section: 1 x 12...18 AWG or 2 x 16...18 AWG



The jumpers must be set correctly for the class A/B selection.

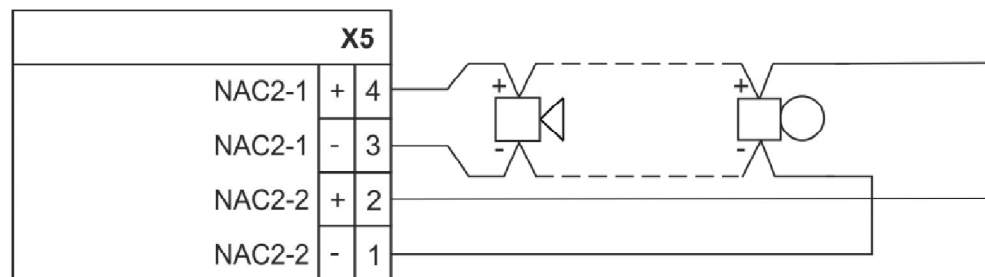


Figure 3: Pin assignment for NAC circuit class A

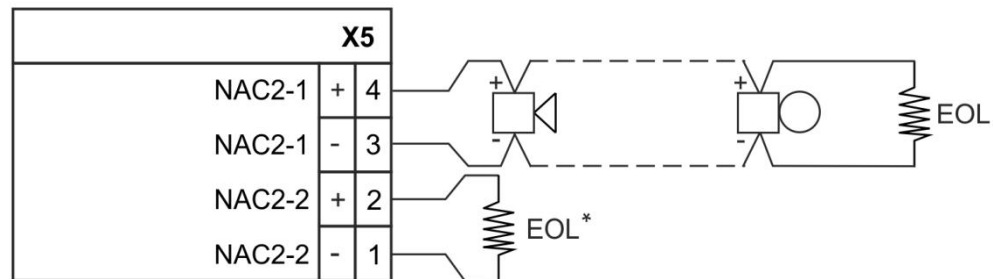


Figure 4: Pin assignment for NAC circuit class B

* EOL resistance must be connected during non-use. EOL resistance: 2.4 k Ω , 0.5 W.

See also

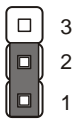
- 2 X604, X605 and X606 NAC 2 class A/B selection jumper [→ 10]

5 Adjusting elements for NAC 2

5.1 X602 Jumper DEGRADED MODE ENABLE/DISABLE for NAC 2 class A or NAC 2-1 class B

Errors of the power PC are displayed on the PMI & mainboard when degraded mode is activated.

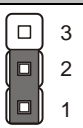
Switching on the degraded mode function of the NAC circuit 2 class A or circuit 2-1 class B

X602	Jumper position	Function	Meaning
	3 - 2	Disable degraded mode for NAC 2 class A or NAC 2-1 class B.	Circuit will not activate the notification appliances if degraded mode is activated and an alarm is present.
	1 - 2	Enable degraded mode for NAC 2 class A or NAC 2-1 class B.	Circuit will activate the notification appliances if degraded mode is activated and an alarm is present.

5.2 X603 Jumper DEGRADED MODE ENABLE/DISABLE for NAC 2-2 class B




Errors of the power PC are displayed on the PMI & mainboard when degraded mode is activated.

Switching on the degraded mode function of the circuit 2-2 class B

X603	Jumper position	Function	Meaning
	3 - 2	Disable degraded mode on NAC 2-2 class B.	Circuit will not activate the notification appliances if degraded mode is activated and an alarm is present.
	1 - 2	Enable degraded mode on NAC 2-2 class B.	Circuit will activate the notification appliances if degraded mode is activated and an alarm is present.

5.3 X604, X605 and X606 NAC 2 class A/B selection jumper

Class A/B setting of the additional NAC circuit

X604 X605 X606	Jumper position	Function	Meaning
 3	3 - 2	Class A	Configures periphery board NAC 2 for class A circuit
 2	1 - 2	Class B	Configures periphery board NAC 2-1 and NAC 2-2 for class B circuit
 1			



The setting for class A/B must also be configured with the Engineering tool set. If the configuration does not match the onboard jumper settings, an error will post on the PMI.

6 Technical data

Supply	Plug strip	X5
	Voltage	DC 24 V Special Application for strobe loads Regulated for non-pulsing loads
	Standby operating current	Max. 15 mA
	Active operating current	Max. 1x class A circuit or 2x class B circuits Max. 3 A for 1x class A circuit Max. 3 A per class B circuit 2x 3 A = 6 A for 2x class B circuits
Outputs	Maximum circuit resistance	1.4 Ω @ 3.0 A
	Supervised for	<ul style="list-style-type: none">• Open circuit• Short circuit• Ground fault
Design		Short-circuit protection
		Voltage surge protection
		Power limited

7 FCC Statement



⚠ WARNING

Installation and usage of equipment is not in accordance with instructions manual

Radiation of radio frequency energy

Interference to radio communications

- Install and use equipment in accordance with instructions manual.
- Read the following information.

This equipment generates, uses, and can radiate radio frequency energy and if not installed and used in accordance with the instructions manual, may cause interference to radio communications.

It has been tested and found to comply with the limits for a Class A computing device pursuant to Part 15 of FCC Rules, which are designed to provide reasonable protection against such interference when operated in a commercial environment.

Operation of this equipment in a residential area is likely to cause interference in which case the user at his own expense will be required to take whatever measures may be required to correct the interference.

Issued by
Siemens Industry, Inc.
Building Technologies Division
8 Fernwood Road
Florham Park, NJ 07932
+1 973-593-2600
www.sbt.siemens.com/FIS

© Siemens Industry, Inc., 2012
Technical specifications and availability subject to change without notice.