

Parts List

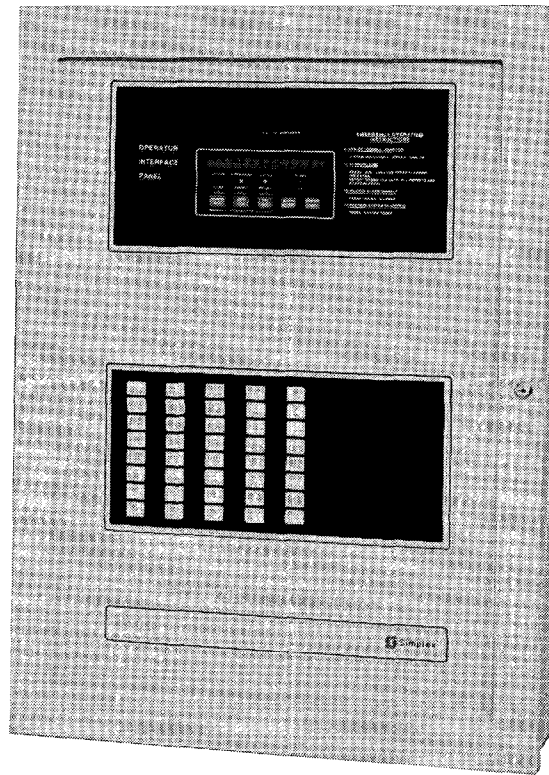


TABLE OF CONTENTS

ITEM	PAGE
Amplifiers	1
Batteries.....	1
Doors, Hinges, Lock Brackets, Retainers, and Shields	2
Fuses	3
I/O Boards.....	4
Labels	4
LEDs, Diodes, and Resistors.....	5
LED/Switch Modules.....	5
MAPNET II* Devices	6
Master Controllers and Motherboards	7
Monitor, Relay, and Signal Cards	8
Mounting Rails	8
Power Supplies and Chargers	9
Remote Modules.....	9
Tone Message and Memory Chips	10
Transformers.....	10
TrueAlarm™ Devices	11
Miscellaneous Modules	11
4100 Programming Kit and Accessories.....	12
Harnesses.....	13

For additional information on firmware part numbers (pre-programmed EPROMs),
refer to FSBs 252R, 253R, and 348R.

4100+ (Typical) w/Voice
(See Tables listed in the illustration below)

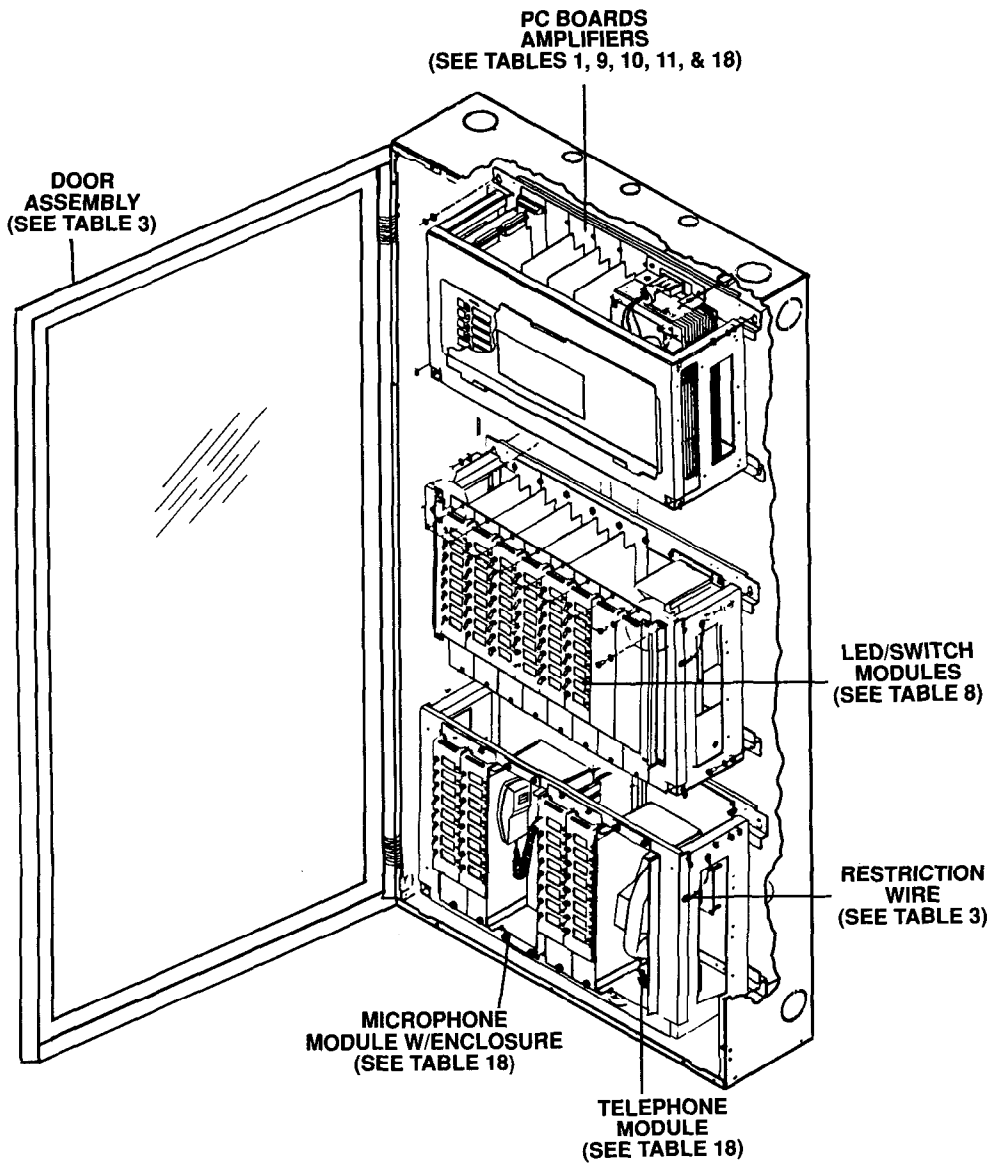


Figure 1

Table 1

AMPLIFIERS	
DESCRIPTION	PART NO.
Amplifier, Audio (25W)	562-905
Transformer for 562-905	478-282
Amplifier Power Supply (25W)	562-917
Amplifier, Audio (25V, 100W)	
Amplifier Board, 100W	562-907
Power Supply Board	565-079
Transformer, 25V	478-296
Transformer, Primary, 120V	635-997
Transformer, Primary, 240V	635-999
Amplifier, Audio (70V, 100W)	636-064
Transformer, 70.7V	478-300
Amplifier w/8A Power-Limited Power Supply (120V)	636-657
Power-Limited Power Supply, 8A (120V)	636-646
Audio Controller Board	562-894

Table 2

BATTERIES	
DESCRIPTION	PART NO.
5.2 Amp-Hour	112-045
6.2 Amp-Hour	112-112
8.0 Amp-Hour	112-044
10.0 Amp-Hour	112-113
18.0 Amp-Hour	112-046
33.0 Amp-Hour	112-053
50.0 Amp-Hour	112-110
110 Amp-Hour	112-123
3.0V Lithium RAM Backup	112-125

Table 3

DOORS, HINGES, LOCK BRACKETS, RETAINERS, and SHIELDS		
ITEM	DESCRIPTION	PART NO.
1	Retainer, 6-Unit Box, Beige	698-767
1	Retainer, 6-Unit Box, Red	698-766
*	Retainer, 2-Unit Box, Beige	698-763
*	Retainer, 2-Unit Box, Red	698-762
*	Retainer, 4-Unit Box, Beige	698-765
*	Retainer, 4-Unit Box, Red	698-764
2	Panel Grounding Strap	635-959
3	Retainer Clips	203-020
4	Lock Brackets, Beige	698-657
4	Lock Brackets, Red	698-656
*	Lock	266-058
*	Lock Nut	266-012
5	Bottom Hinge, Beige	698-626
5	Bottom Hinge, Red	698-627
6	Top Hinge, Beige	698-628
6	Top Hinge, Red	698-629
7	Door, 6-Unit Box, Beige (w/Glass)	698-702
7	Door, 6-Unit Box, Red (w/Glass)	698-701
*	Door, 2-Unit Box, Beige (w/Glass)	698-696
*	Door, 2-Unit Box, Red (w/Glass)	698-695
*	Door, 4-Unit Box, Beige (w/Glass)	698-699
*	Door, 4-Unit Box, Red (w/Glass)	698-698
*	Door, 6-Unit Box, Beige (Solid)	698-757
*	Door, 6-Unit Box, Red (Solid)	698-758
*	Door, 2-Unit Box, Beige (Solid)	698-688
*	Door, 2-Unit Box, Red (Solid)	698-760
*	Door, 4-Unit Box, Beige (Solid)	698-754
*	Door, 4-Unit Box, Red (Solid)	698-755
*	Semi-Flush Trim Band, Beige (2-, 4-, and 6-Unit Boxes)	740-673
*	Semi-Flush Trim Band, Red (2-, 4-, and 6-Unit Boxes)	740-674
*	Bumper, Rubber (2 per door)	635-935
*	RF Shield Kit (2")	740-828
*	RF Shield Kit (4")	740-837
*	RF Shield Kit (Full Bay)	740-838
*	RF Shield Kit (Bay-to-Cover)	740-849
†	Restriction Wire	635-694

* Not Shown

† Shown in Figure 1

4100+ (Typical) w/Voice and Retainer (See Table 3)

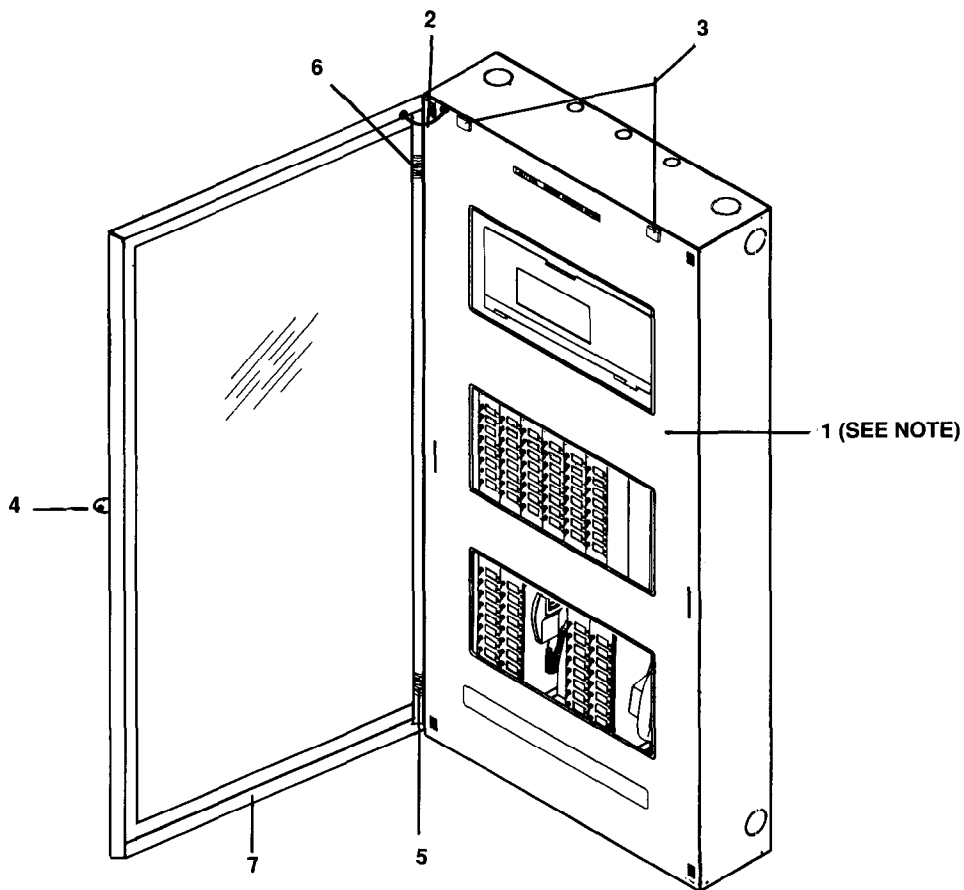


Figure 2

NOTE: 6-Unit Retainer shown. For 2- and 4-Unit Retainers, see Table 3.

Table 4

FUSES	
DESCRIPTION	PART NO.
0.4 Amp, F6, Internal Serial Communication Bus - RIC F1	208-134
2 Amp, Signal Card (F1 thru F6) and Power Supply (F4)	208-023
2 Amp, MAPNET II® Devices (562-937, -939, -940, & -943)	208-048
3 Amp, Master Controller (F1 thru F5), Power Supply (F3) and Auxiliary Relay (F1 thru F8)	208-132
5 Amp, Expansion Power Supply (F1 and F2 - w/leads [UL])	208-136
5 Amp, Power Supply (F1 and F2)	208-004
8 Amp, Expansion (50Ah) Battery Charger (F1)	208-121
12 Amp, Power Supply (8 Amp) for 100 Watt Amplifier	208-142
15 Amp, Enhanced (100Ah) Battery Charger, Battery, and AC Power Fuse	208-053
20 Amp, Battery Fuse	208-094
30 Amp for use in 733-621 Battery Harness	208-156
5 Amp, 8-Point Relay Board 565-045	208-140
80 Amp for use in 110Ah Charger	208-154

Table 5

I/O BOARDS	
DESCRIPTION	PART NO.
I/O Interface Board, 24-Point (Daughter Card)	562-789
I/O Interface Board, 24-Point (Motherboard)	562-856
Graphic, 24-Point I/O	565-087
Graphic I/O (RCU/SCU)	565-035

Table 6

LABELS	
DESCRIPTION	PART NO.
Zone Labels, 1 thru 54	521-572
Zone Labels, 55 thru 128	521-573
Signal Labels, 1 thru 128	521-574
Termination Labels, 8-Zone Monitor Card, Style B (formerly Class B)	521-578
Termination Labels, 8-Zone Monitor Card, Style D (formerly Class A)	521-579
Termination Labels, 6-Circuit Signal Card, Style Y (formerly Class B)	521-580
Termination Labels, 6-Circuit Signal Card, Style Z (formerly Class A)	521-581
Termination Labels, 2-Circuit Signal Card, Style Z	521-591
Termination Labels, 2-Circuit Signal Card, Style Y	521-592
Termination Labels, Auxiliary Relay Card, 2 Amp	521-583
Termination Labels, Auxiliary Relay Card, 10 Amp	521-593
Monitor Labels, V.A. Power Charger	521-586
Address Labels for all motherboards,	521-589
Annunciator Control Module Labels	521-613
Single Channel Audio Control Module Label	521-614
Dual Channel Audio Control Module Label	521-615
Triple Channel Audio Control Module Label	521-616
Triple Channel Speaker Switch Module Label	521-617
MAPNET® Isolator Labels	521-657

Table 7

LEDs, DIODES, and RESISTORS	
DESCRIPTION	PART NO.
Diode, Battery Protection	184-038
Diodes for 8 Amp Expansion Power Supply	184-065
Red LED	274-240
Yellow LED	274-241
Green LED	274-242
LED spacer	274-245
Resistors (20 Ohm) for Graphic I/O	382-110
Resistors (2K Ohm) for Graphic I/O	378-253
Resistor for Power Charger Card	382-091
Resistor for Supervised IAM (100K Ohm, 1/2W)	378-022
Resistor (1K Ohm)	378-093
Resistor (560 Ohm)	378-134
Resistor (390 Ohm)	378-356
Resistor (3.3K Ohm) for Monitor End-of-Line	378-017
Resistor (10K Ohm) for Signal End-of-Line	378-030
Resistor (5.6K Ohm) for Security Current Limit	378-046
Resistor (8.2K Ohm) for Security End-of-Line	378-090
Resistor (12K Ohm) for Security Current Limit	378-069

Table 8

LED/SWITCH MODULES	
DESCRIPTION	PART NO.
LED/Switch Controller Board, 64/64 (Daughter Card)	562-729
LED/Switch Controller Board, 64/64 (Motherboard)	562-856
Graphic, 64/64 LED/Switch	565-089
LED/Switch Module (8 Red LEDs)	562-822
LED/Switch Module (8 Red & 8 Yellow LEDs)	562-806
Overlay for 562-822 & -806	635-892
LED/Switch Module (8 Switches & 8 Red LEDs)	562-814
Overlay for 562-814	635-894
LED/Switch Module (8 Switches, 8 Red & 8 Yellow LEDs)	562-805
LED/Switch Module (8 Maint. Switches, 8 Red & 8 Green LEDs)	562-747
Overlay for 562-805 & -747	635-699
LED/Switch Module, Blank	635-777
LED/Switch Module, Annunciator Control	565-072
LED/Switch Module, Single Channel Audio Control	565-073
LED/Switch Module, Dual Channel Audio Control	565-074
LED/Switch Module, Triple Channel Audio Control	565-075
LED/Switch Module, Triple Channel Speaker Select	565-076
LED/Switch Audio Annunciator Control Module (8 LEDs & 8 Switches)	565-120
Audio LED Assembly	635-948

Table 9

MAPNET II® DEVICES	
DESCRIPTION	PART NO.
MAPNET II® Interface Board (Transceiver)	562-976
MAPNET II® Isolator (uses 565-727 Motherboard)	565-158
MAPNET II® Motherboard/Power Supply	562-974
Monitor ZAM (Style B [formerly Class B])	562-936
Monitor ZAM (Style D [formerly Class A])	562-941
4-Wire Detector ZAM	562-937
Addressable Detector Board (Hochiki)	562-938
Signal ZAM (Style Y [formerly Class B])	562-939
Signal ZAM (Style Z [formerly Class A])	562-943
Control ZAM	562-940
Pull Station IAM	562-942
Distributed Power IAM	562-944
Single Station Detector IAM	562-945
Addressable Duct Housing Detector Board	562-962
ZAM Mounting Plate (3 per panel)	617-465
Supervised IAM 4"	565-237
Supervised IAM 2" (SMT)	617-782
Line-Powered MAPNET Isolator	565-191

Table 10

MASTER CONTROLLERS and MOTHERBOARDS	
DESCRIPTION	PART NO.
Master Controller Board (4100)	562-771
Master Display Board	562-795
Master Controller Board (4100+/UT) (w/o Signal Silence Suppression)	565-148
Master Controller Board (4100+/UT) (w/Signal Silence Suppression)	565-333
Master Phone Controller	562-991
Master Controller Board (UT)	565-148
Master Display Board (4100+/UT) (w/Alarm Silenced LED & Priority 2)	565-331
Display Overlay (4100+/UT) (w/Alarm Silenced LED & Priority 2)	636-394
Master Motherboard (Termination Module), Style B (formerly Class B) (w/o Suppression)	562-855
Master Motherboard (Termination Module), Style B (w/Suppression)	562-859
Master Motherboard (Termination Module), Style D (formerly Class A) (w/o Suppression)	562-978
Master Motherboard (Termination Module), Style D (w/Suppression)	562-979
Motherboard, Style B (w/o Suppression)	562-856
Motherboard, Style B (w/Suppression)	562-799
Motherboard, Style D (w/o Suppression)	562-823
Motherboard, Style D (w/Suppression)	562-733
Motherboard, Auxiliary (Relay), 2 Amp (w/o Suppression) 32-Point	562-727
Motherboard, Auxiliary (Relay), 2 Amp (w/Suppression) 32-Point	562-858
Motherboard, Auxiliary (Relay), 10 Amp	562-952
Display Board (UT) (w/o Alarm Silence)	565-173
Display Overlay (w/o Alarm Silence)	635-775
Universal Master Motherboard (UT)	565-274

Table 11

MONITOR, RELAY, and SIGNAL CARDS	
DESCRIPTION	PART NO.
Monitor Card, 8-Zone, Style B	562-731
Monitor Card, 8-Zone, Style D	562-813
Coded Monitor Security Card, 8-Zone	565-226
Coded Monitor Security Card, Class A, 8-Zone	565-231
Coded Signal Riser Module	636-218
Auxiliary Relay Card, 2 Amp (4 Relays)	562-760
Auxiliary Relay Card, 3 Amp (8 Relays)	565-045
Auxiliary Relay Card, 10 Amp (4 Relays)	562-951
Signal Card, Single Channel, 2-Circuit, Style Y (formerly Class B)	565-011
Signal Card, Single Channel, 2-Circuit, Style Z (formerly Class A)	565-010
Signal Card, Dual Channel, 2-Circuit, Style Y	562-922
Signal Card, Dual Channel, 2-Circuit, Style Z	562-921
Signal Card, Triple Channel, 2-Circuit, Style Y	565-083
Signal Card, Triple Channel, 2-Circuit, Style Z	565-082
Signal Card, 6-Circuit, Style Y	565-009
Signal Card, 6-Circuit, Style Z	565-008
Signal Card, 4-Point Dual or 2-Point Quad	565-155

Table 12

MOUNTING RAILS	
DESCRIPTION	PART NO.
2-Unit for 4100-2001	636-147
4-Unit for 4100-2002	636-148
6-Unit for 4100-2003	636-149
Wire Trough for Rails	635-922

Table 13

POWER SUPPLIES and CHARGERS	
DESCRIPTION	PART NO.
Power Supply, Master (5 Amp) Transformer for 562-808	562-808 478-282
Power Supply, Expansion (5 Amp) Power Supply Board, Expansion (5 Amp)	740-885 562-827
Power Supply, Expansion (8 Amp) Power Supply Board, Expansion (8 Amp)	740-886 565-028
Power Supply, Expansion (8 Amp) Power-Limited	636-645
Intelligent Power Supplies (IPS) IPS Master Power Supply w/Internal Charger	636-181
IPS Master Power Supply w/External Charger	636-372
IPS Remote Power Supply w/Internal Charger (no 8VDC Converter)	636-283
IPS Remote Power Supply w/External Charger (no 8VDC Converter)	636-373
Universal Power Supply (UPS) 120 VAC	740-802
Regulator Module	635-747
Power Charger, 120VAC	636-058
Power Charger Card	562-812
Enhanced Battery Charger Interface Module Overlay for 562-961	562-961 635-891
Power Supply Board, 100W (8 Amp)	565-079
Converter, 12VDC (2 Amp)	565-215

Table 14

REMOTE MODULES	
DESCRIPTION	PART NO.
Remote Annunciator Interface (RAI) Card	562-793
Remote Control Unit (RCU)	562-876
Remote LCD Annunciator CPU Board	565-078
Display Board	565-057
Overlay	636-027
Key (for RCU and LCD) Key Switch	454-101 454-130
Remote LCD Annunciator w/Alarm Silenced LED LCD Display	565-329
Overlay	636-409
Remote Serial Interface Card (RIC)	562-791
Remote Phone Handset	625-215
Remote Interface Card (RIC II)	565-233
Remote Interface Unit, Style 7 (RUI)	565-217

Table 15

*TONE MESSAGE and MEMORY CHIPS	
DESCRIPTION	PART NO.
Tones and Walk Test™ Message Chip Set (U42) for Audio Controller Board (Chip Set No. 1)	740-681
**Tones, Walk Test™, and Standard Message Chip Set for Message Memory Board	
Chip Set No. 2 (Tones, Walk Test™, & Standard Messages)	740-728
Chip Set No. 3 (Tones, Walk Test™, Standard Messages, & Voice Coding)	740-729
Chip Set No. 4 (Tones, Walk Test™, & Boston Message)	740-730
Chip Set No. 5 (Tones, Walk Test™, & Fairfax City Message)	740-731
Chip Set No. 6 (Tones, Walk Test™, & Montgomery City Message)	740-732
Chip Set No. 7 (Tones, Walk Test™, Tornado Warning & Standard Messages)	740-733
†CFig EPROM (U33), 512KB	246-326
†CFig EPROM (U33), 1MB or System EPROM (U34), 1MB	246-355
†System EPROM (U34), 2MB (Used with Release 4.01 and above)	246-420
†CFig RAM (U45), 1MB or System RAM (U35), 1MB	246-360
†System RAM (U35), 256KB	246-329
††CFig Flash EPROM 1MB (4100+/UT)	246-425
††System RAM 256KB (4100+/UT)	246-423
††System EPROM (U14, U16) 2MB for use on 565-333 (Release 7.01 Exec Software)	246-497
††System EPROM (U13, U14) for 565-148, (U14, U16) for 565-333	246-424
††CFig Flash (U12) for 565-148, (U11) for 565-333, 1MB	246-425
††CFig Flash 2MB (U12) for 565-148, (U11) for 565-333, 2MB (Network NDU)	246-469

* Version 3.01 and above includes Chip Set .MSG Disk.

** Chip Set No. 8 and higher are custom sets. Order them from Application Engineering.

† See FSB-235R for more information on these chips.

†† See FSB-372R for more information on these chips.

Table 16

TRANSFORMERS	
DESCRIPTION	PART NO.
Transformer for 5 Amp Master Power Supply or 25 Watt Amplifier	478-282
Transformers for 8 Amp Master Power Supply	
Main Transformer	478-291
Battery Transformer	478-201
Transformer for Expansion Power Supply (120VAC)	478-232
Transformer for Expansion Power Supply (240VAC)	635-914
Transformer Assembly for 4100 Audio Power Supply	635-926
Transformer, Audio (25V)	478-296
Transformer, Audio (70.7V)	478-300

Table 17

TrueAlarm™ DEVICES	
DESCRIPTION	PART NO.
Addressable Duct Detector (w/Relay)	565-131
Interface Board (w/Relay)	565-124
Addressable Duct Detector (w/o Relay)	565-144
Interface Board (w/o Relay)	565-143
Detector Base (w/o Relay)	565-064
Detector Base (w/Relay)	565-118
Detector Base (w/Sounder)	565-065

Table 18

MISCELLANEOUS MODULES	
DESCRIPTION	PART NO.
Communication Board, Dual RS232/2120	565-004
Communication Board, Style 7	562-289
Distribution Block	450-323
Message Expansion Card	562-972
Microphone Only	275-004
Status Command Unit (SCU)	562-817
Telephone Module	625-215
Voice Tone Generator Backup	562-896
Message Memory Board	562-898
Meter Module, Current (0-5A) (System)	278-039
Meter Module, Current (0-10A) (System)	278-036
Meter Module, Voltage (0-50VDC) (System)	278-041
Microphone Module w/Enclosure	635-946
Decoder Module	565-270
Ribbon Replacement for DC Printer (2190-9039)	636-069
Paper Replacement for DC Printer (2190-9039)	636-068
AC Line Filter (120V)	206-009
City I/O Assembly for Power-Limited Applications	636-658

Table 19

4100 PROGRAMMING KIT and ACCESSORIES	
DESCRIPTION	PART NO.
Portable Computer (Dual Disk Driver) w/MS-DOS and PC-WRITE	553-526
Computer Carrying Case (2 pcs) for 553-526	553-527
Dot Matrix Printer	553-528
Printer Cable	553-529
PROM Eraser	553-531
PROM Programmer	553-532
Download Cable (PC to 4100)	553-535
Download Cable (9-Pin to 4100)	733-794
4100 Programmer Software (2-Disk Set, Non-Voice [Phase I])	553-542
4100 Programmer Software (4-Disk Set including Voice MAPNET® 2120 Interface [Phase II])	553-543
4100 Programmer Software (4-Disk Set including TrueAlarm™ [Phase III])	553-563
4100 Programmer Software (7-Disk Set including UT, 8-Pt.Relay Board, & MAPNET® Isolator) English version (Phase IV) French version (Phase IV)	553-575 553-576
4100 Programmer Software (6-Disk Set including 4100 Enhanced, 1000 points) English version (Phase V, version 5.01) French version (Phase V, version 5.01)	553-600 553-601
*4100+/UT Programmer English Version (6-Disk Set, version 5.03) French Version (5-Disk Set, version 5.03)	553-612 553-613
*4100+/UT Programmer (7 Disk Set, Including Alarm Silenced LED, 0.2% Photo, [English])	553-631
*4100+/UT Programmer 8-Disk Set (see FSB-417R for features) English Version French Version	553-690 553-691
†Portable Computer w/20MB Hard Drive, MS-DOS, and PC-WRITE license certificate	553-554
†AST Notebook Computer 386 SL/25 w/80MB hard drive & MS-DOS †Computer Carrying Case for 553-646	553-646 553-555
†Gateway CB 2000 Computer 486SX25, w/170MB HD & 8MB RAM †Computer Carrying Case for 553-671	553-671 553-672
††Null Modem cable	Local Purchase
††DB9-F/DB25-M Adapter (Required for 553-554 and 553-646)	Local Purchase

† These portable computers and carrying cases are selectively shipped when 4100 Programming Kits are requested from Fitchburg Service Parts.

†† Unlike the NEC computer (Part No. 553-526) which has a 25-pin serial or RS232 port (COM1), the Toshiba computer (Part No. 553-554), the AST computer (Part No. 553-646), and the Gateway 2000 Computer (Part No. 553-671) have 9-pin ports. Use the cabling information in Figure 3 when connecting the Toshiba, AST, or Gateway computer to the PROM (PROMAC) Programmer (Part No. 553-532).

**INTERFACE CABLING FROM
553-554 TOSHIBA OR 553-572 AST COMPUTER TO 553-532 PROMAC PROGRAMMER**

Toshiba or AST – RS-232 (9 Pins)

PROMAC – RS-232 (25 Pins)

Pin #1 Data Carrier Detect	To	Pin #8
#2 Serial Receive Data		#2
#3 Serial Transmit Data		#3
#4 Data Terminal Ready		#5
#5 Ground		#7
#6 Data Set Ready		#4
#7 Request To Send		#6
#8 Clear To Send		#20
#9 Ring Indicator		Not Used

Figure 3

HARNESSES

PART NO.

Harness (This Flex Ribbon Cable connects one Display Card [P2] to an adjacent Display Card [P1]; both are controlled/monitored by common LED/Switch Controller.) (2"/26 pins)	166-226
Harness (This Flex Ribbon Cable connects across blank Display Cards in the same row.) (6"/26 pins)	166-227
Harness (This Flex Ribbon Cable for LED Switch Modules connects from Master Controller [P10] to first Display Card [P1] OR from 64/64 LED Switch Controller Card [P2] to Display Card [P1].) (34"/26 pins)	166-228
Harness (This Flex Ribbon Cable for LED Switch Modules connects from last Display Card [P2] in one row to first Display Card [P1] in next row.) (56"/26 pins)	166-229
Harness (Connects from Master Controller [P9] to Master Display [P2].) (3"/26 pins)	733-249
Harness (Connects from Master Power Board [P17] to External Charging Resistor mounted on adjacent plate) (10.75"/2 wires)	733-520
Harness (Connects from Master Power Supply [P7] to Master Controller [P3].) (10"/16 pins)	733-521
Harness (Connects from Master Controller [P4 thru P7] to Master Termination Board [P4 thru P7]. See Figure 4.) (44"/16 pins)	733-522

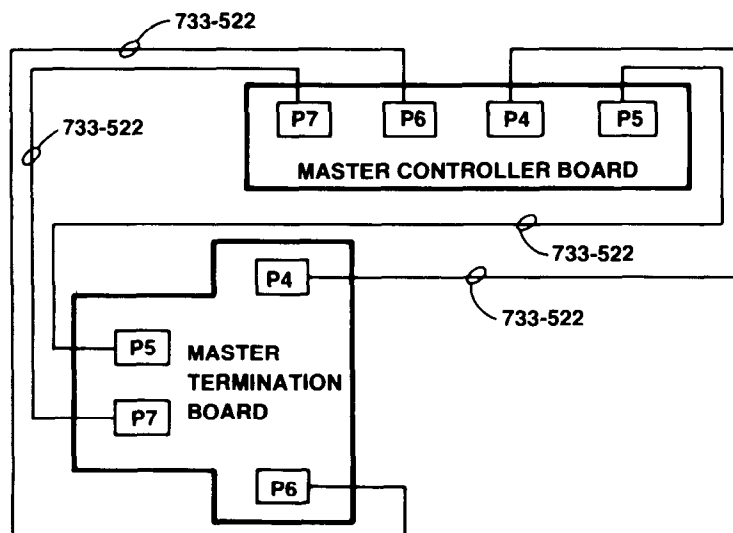


Figure 4

HARNESSES (cont'd)

PART NO.

Harness (This Power Harness connects from 25-Watt Amplifier [P8] to 8-Amp Power Supply [P4], connects from Master Power Supply Board [P10] to Master Controller [P1], OR connects from Expansion Power Supply [P4 thru P7] to the following:

- Master Controller [P1]
- 2-Circuit Signal Card [P2 or P3]
- 6-Circuit Signal Card [P2 or P3]
- Auxiliary Relay Card [P2]
- MAPNET® Power Supply Card [P4].)

(49" / 2 wires)

733-523

Harness (This Common Meter Harness connects from Master Power Board [P8] and/or [P14] to Meter Module OR from Expansion Power Supply [P8] to Meter Module. See Figure 5.)

(45" / 4 wires)

733-524

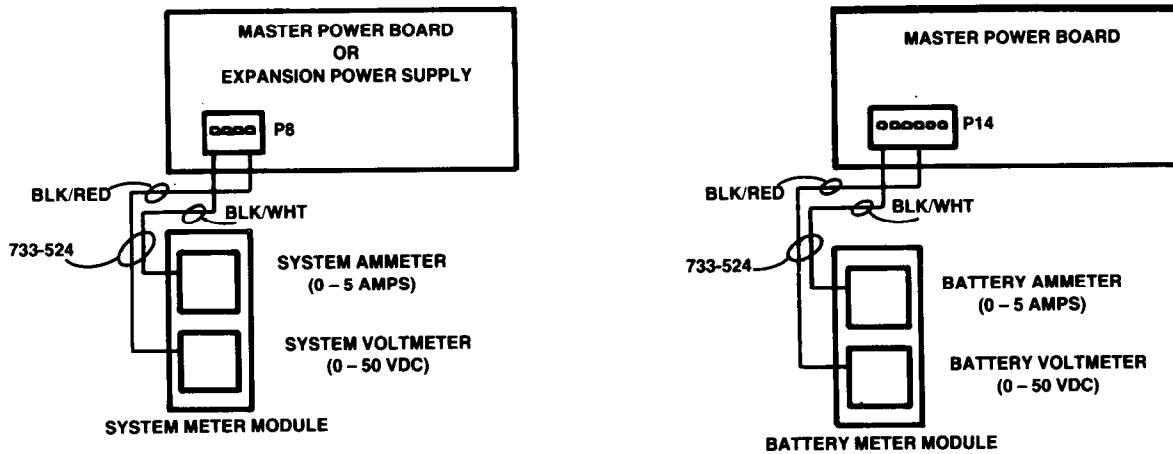


Figure 5

Harness (Connects Power and Internal Serial Communications from Master Controller to Expansion Cards via each row of motherboards *IN THE SAME BOX* as Master Controller, OR connects from Master Controller to Phone Card [P1/P2 — Power] and [P8/P9 — Communications] or to Audio Card [P5/P13 — Power] and [P2/P3 — Communications]. See Figure 6.) (36" / 8 wires)

733-525

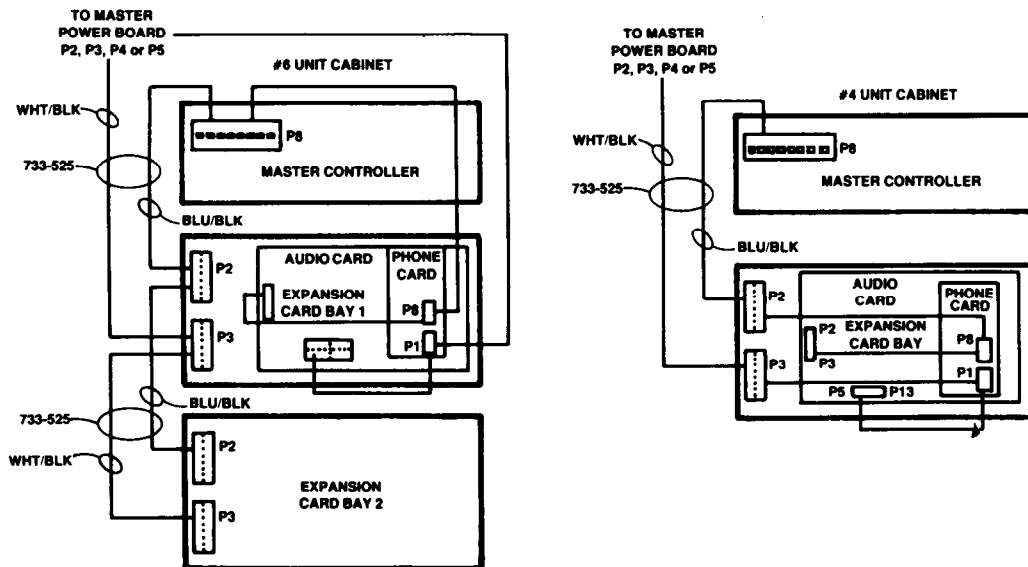


Figure 6

HARNESSES (cont'd)

PART NO.

Harness (This Battery Harness interconnects Battery Dist. Block in multiple cabinets) (11 ¹ / ₂ wires)	733-532
Harness (Connects from External Power Supply [P10] to Filter Capacitors mounted on adjacent plate) (6 ³ / ₄ wires)	733-533
Harness (Jumpers signal power from 2 or 6-circuit Signal Card [P2 or P3] OR jumpers from signal Card [P3] to adjacent Signal Card or Auxiliary Relay Card [P2]) (7 ¹ / ₂ wires)	733-534
Harness (This Supervision/Power Supply Common Harness connects from Master Power Board [P1] to Expansion Power Supply [P2] in next cabinet OR to last Expansion Power Supply [P2] in one cabinet and "daisy-chains" to first Power Supply [P3] in the next box and so on) (132 ¹ / ₃ wires)	733-536
Harness (Connects from Battery Dist. Block to Internal Batteries [includes in-line fuse and fuse holder]) (30 ¹ / ₂ wires [14 AWG])	733-537
Harness (Connects from Expansion Power Supply [P1] to Battery Dist. Block OR from Dual 25- Watt Amplifier Power Supply [P7] to Distribution Block) (58 ¹ / ₂ wires)	733-541
Harness (Connects Power and Internal Serial Communications between the cabinet containing Master Controller and Expansion Cards in multiple cabinets) (74 ¹ / ₈ wires) (See Figure 7)	733-542

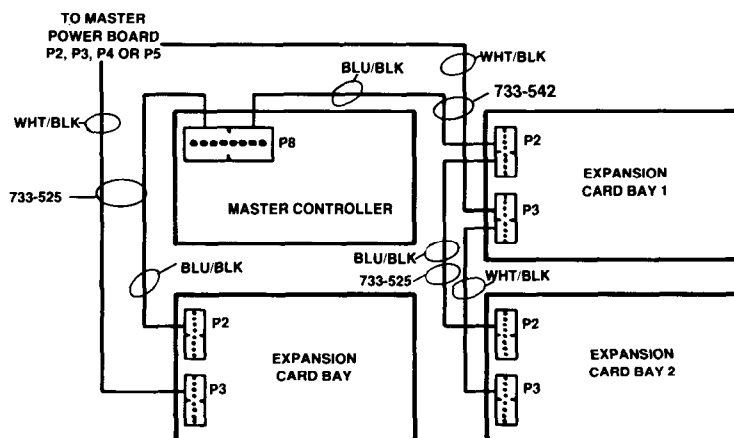


Figure 7

Harness (This Supervision/Power Supply Common Harness connects from Master Power Board [P1] to first Expansion Power Supply [P2]. The next Expansion Power Supply [P2] "daisy-chains" to next Power Supply [P3] <i>IN THE SAME BOX</i> and so on) (39 ¹ / ₃ wires)	733-543
Harness (Connects from Expansion Battery Charger [TB1-11 and TB1-12] to externally mounted capacitors) (7 ¹ / ₂ wires)	733-556
Harness (This 120VAC Harness connects 120 VAC input to AC Terminal Block on Battery Charger Assembly and to Enhanced Battery Charger Interface Board [P3]) (13 ¹ / ₂ wires)	733-557
Harness (Connects from Enhanced Battery Charger Interface Board [P2] to Expansion Battery Charger [P1] OR from Audio Card to the Phone Card [P5]) (12 ¹ / ₆ wires)	733-558
Harness (Connects from the Enhanced Battery Charger Interface Board [P1] to the Expansion Battery Charger [P4]) (21 ¹ / ₂ wires)	733-559
Harness (This Battery Harness connects from Expansion Battery Charger [TB1-5 and TB1-6] to the Battery Distribution Block OR from 100-Watt Amplifier Power Supply or 8-Amp Expansion Power Supply [TB1-11 and TB1-12] to the Distribution Block) (24 ¹ / ₂ wires [14 AWG])	733-562

HARNESSES (cont'd)

PART NO.

Harness (This Meter Module harness connects from Expansion Battery Charger [TB1] to the Meter Module. See Figure 8.) (25"/4 wires [14 AWG])

733-566

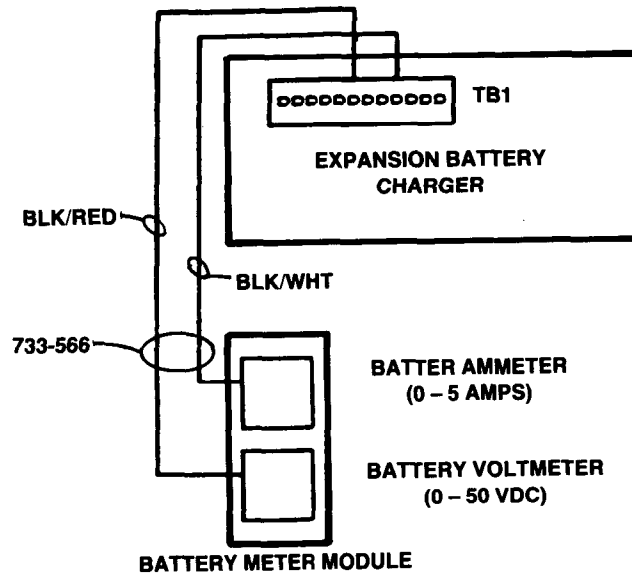


Figure 8

Harness (Audio Master [P10, P11, or P12] to Amplifier [P7] in another box OR from Amplifier [P5] to Amplifier [P7] in another box.)

- 90"/10-pin ribbon
- 20"/10-pin ribbon
- 30"/10-pin ribbon

733-583
733-769
733-770

Harness (UPS Power Supply, 120VAC)

733-804

Harness (UPS Power Supply, 240VAC)

733-805

DC Printer Harness (2190-9039)

733-653

* Harness (Connects from Phone Card [P6] to Microphone Switch Assembly.) (4"/4 wires)

733-575

Harness (Connects from Microphone to Audio Card [P1 and P6].) (9"/10 wires)

733-576

* Harness (Connects from Signal Card output to Signal Card input [from P2 to P3 and from P3 to P4] ["Daisy-chains" signal circuit power].) (4"/Twisted Shielded)

733-577

* Harness (Connects from Audio Card [P7, P8 or P9] to Amplifier [P6], from Phone Card [P4] to TALK LINE IN, OR from Phone Card [P9] to Signal Card [P4].) (24"/Twisted Shielded)

733-578

* Harness (Connects from Phone Card [P3] to Signal Card [P4] or Amplifier [P9 or P10] to Signal Card [P2] in the same box; from Amplifier [P6] to Amplifier [P6] in the same box; from Amplifier [P9] to Amplifier [P4] or Amplifier [P4] to Amplifier [P10] in the same box; from Phone Card [P9] to Signal Card [P4]; OR from Phone Card [P4] to TALK LINE IN.) (43"/Twisted Shielded)

733-579

* Harness (Connects from Primary Amplifier [P4] to Prim. Amplifier [P4] in another box; from Prim. Amplifier [P4] to Backup Amplifier [P18]; from Prim. Amplifier [P6] to Prim. Amplifier [P6] in another box; from Audio Card [P9] to Backup Amplifier in another box; OR from Prim. Amplifier [P4] to Prim. Amplifier [P4] in another box.) (76"/Twisted Shielded)

733-580

* See Amplifier Interconnect Drawings 841-784 for these Harnesses

HARNESSES (cont'd)	PART NO.
* Harness (Connects from Primary Amplifier [P7] to Audio Card [P12].) (24"/10-pin ribbon)	733-581
* Harness (Connects from Amplifier [P5] to Amplifier [P7] in the same box.) (45"/10-pin ribbon)	733-582
* Harness (Audio Master [P10, P11, or P12] to Amplifier [P7] in another box OR from Amplifier [P5] to Amplifier [P7] in another box.) (90"/10-pin ribbon)	733-583
14" Flex Cable	166-271
Harness – 25 Watt Amplifier w/Power Supply	733-573
Harness – 25 Watt Dual Amplifier w/Power Supply	733-574
Harness – Audio Signal Return Extension	733-629
Harness – Jumper 8C to 24C	733-638
Harness – Audio Signal Connection	733-643
Harness – 33" 8/24V Power Connection	733-659
Harness – UT Power Supply to Expansion Power Supply	733-660
Harness – UT Power Supply to Expansion Power Supply Box to Box	733-661
Harness – 51" Signal Power Connection	733-663
Harness – 12" Communication Jumper	733-665
Harness – 36" Communication Jumper	733-666
Harness – 51" Signal Power Return Connection	733-667
Harness – UT Master	733-669
Harness – 24" (24V) Power Connection	733-671
Harness – 33" Communication Connection	733-672
Harness – 51" Power Supply to Battery Distribution Block	733-676
Harness – RUI Style "B" Assembly	733-716
Harness – 50" Signal Power Connection	733-734
Harness – City	733-737
Harness – Back Up	733-738
Harness – System Communication	733-739
Harness (Connects from AC Distribution Block to 120V Expansion UT Power Supply)	733-763
Harness (Connects from AC Distribution Block to 240V Expansion UT Power Supply)	733-764
Harness (Connects from Utility Power Supply CDT [P4] to Distributed Power Supply IAM)	733-733
Harness (Connects from UPS Power Supply Battery Plug to Battery Distribution Block)	733-749
47" Audio Harness Switch Amps to Primaries from Multichannel Card ([P6] or [P7] to Amp [P6] and [P9])	733-757

* See Amplifier Interconnect Drawings 841-784 for these Harnesses

HARNESSES (cont'd)	PART NO.
84" Harness (Connects from UT Power Supply B or C Tap Signal Power to Signal Card	733-766
84" Harness (Connects from Signal Supervision Signal Card to Power Supply)	733-767
Box to Box (240") Audio Controller Ribbon Cable from Audio Master ([P10 thru P12]) to Amp [P7] or from Amp [P5] to Amp [P7]	733-769
Box to Box (360") Audio Controller Ribbon Cable from Audio Master ([P10 thru P12]) to Amp [P7] or from Amp [P5] to Amp [P7]	733-770
Redundant Master Controller System Power Harness	733-784
Harness (Connects from UT Mother Board [TB1] to RS232, Style 7 [TB1])	733-786
Download Cable (9-pin to 10-pin, 4-wire)	733-794
Download Cable (25-pin to 10-pin)	733-535
Power Harness (Connects A+B Tap Terminals on UPS Power Supply to Terminal Block Assy for Power-Limited Applications [Terminal Block & Bracket are included in Harness Assy])	733-864

